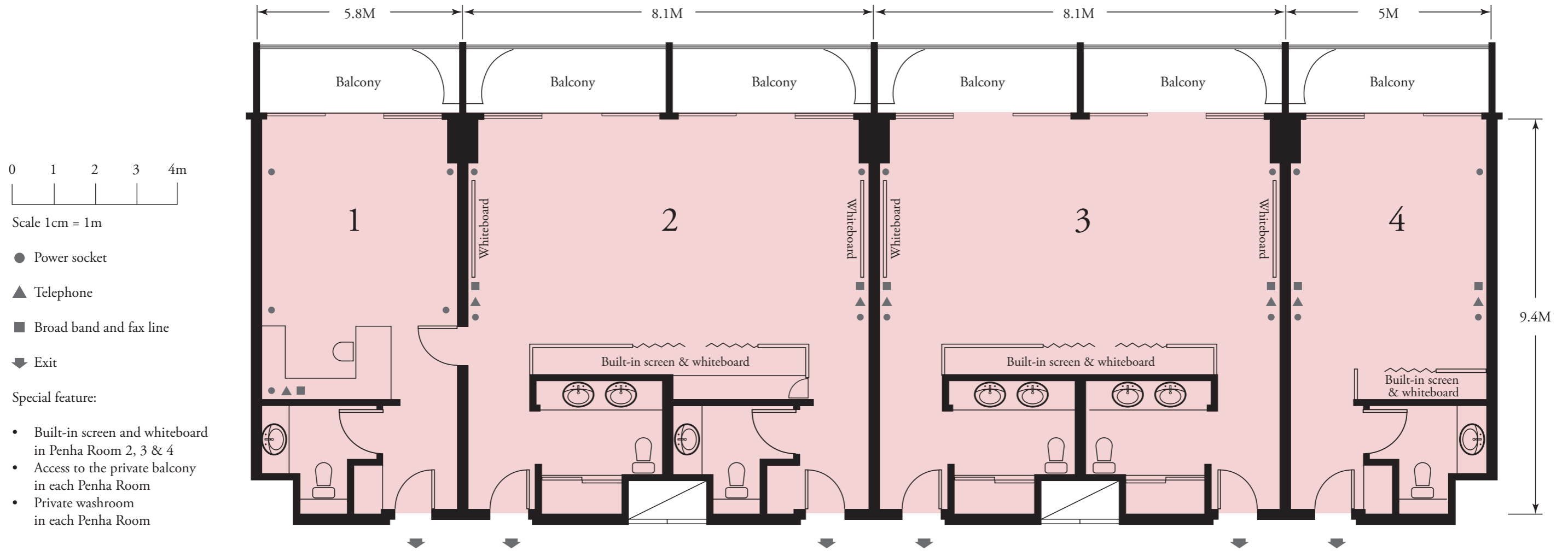
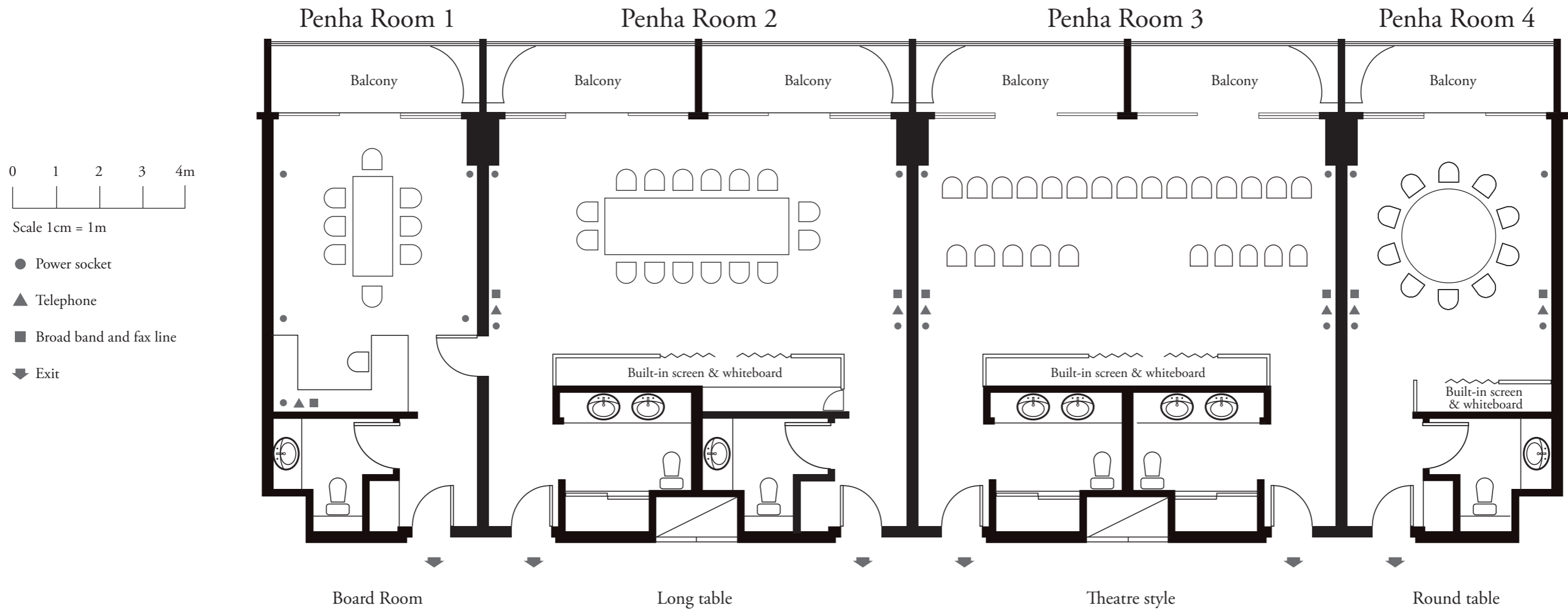


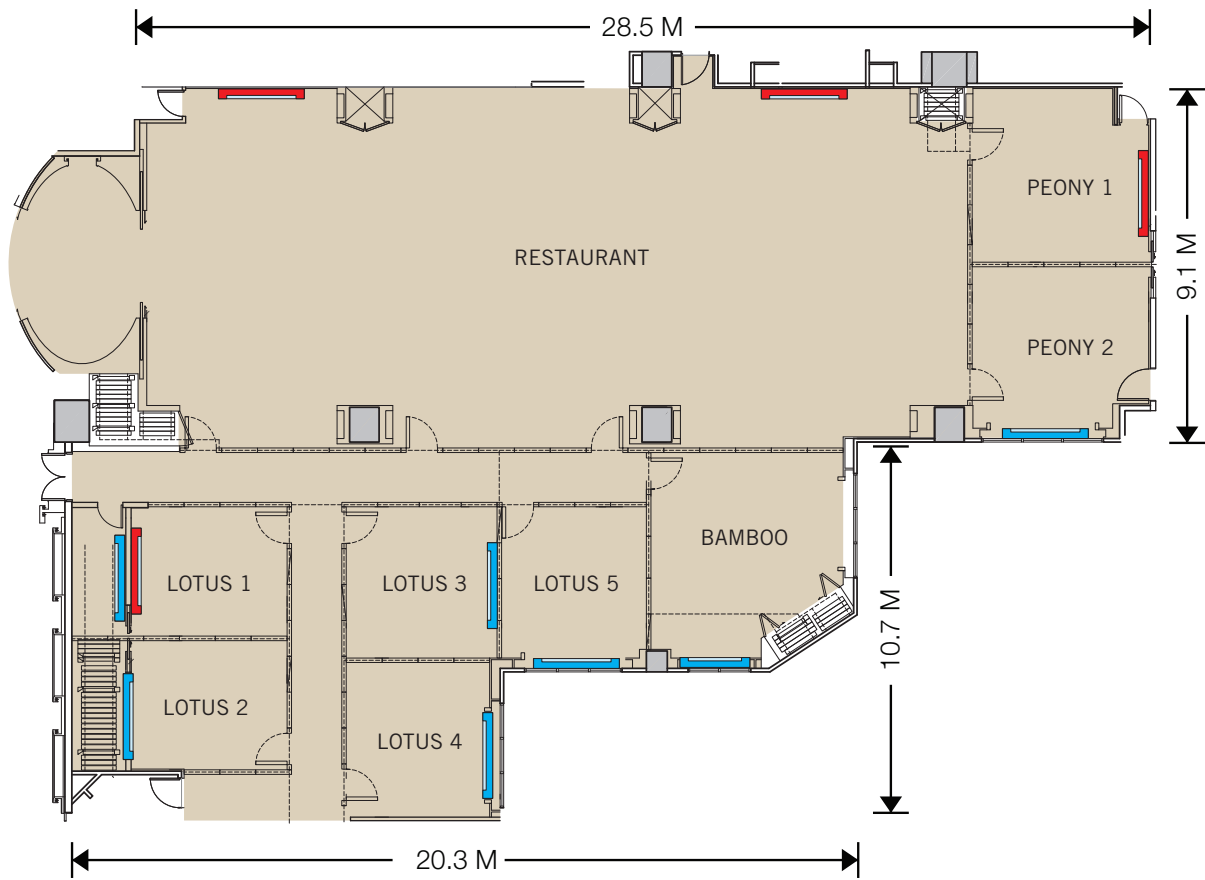
# Penha Rooms




Rooms	Length		Width		Usable area		Total area		Ceiling height				Doorway				Meeting capacity					Banquet capacity			
	Metres	Feet	Metres	Feet	Square metres	Square feet	Square metres	Square feet	Min	Max	Metres	Feet	Metres	Feet	Metres	Feet	Hollow	U-shape	Classroom	Theatre	Round table	Long table	Set lunch/dinner	Buffet (food table inside)	Cocktail
<b>Penha Room 1</b>	5.8	19'0"	3.9	12'10"	22.6	243	32.0	344	-	-	2.8	9'2"	2.1	6'10"	0.8	2'7"	-	-	-	-	-	8	-	-	-
Room 2	8.1	26'8"	4.4	14'5"	35.6	383	64.0	688	-	-	2.8	9'2"	2.1	6'10"	0.8	2'7"	-	-	18	25	20	16	-	-	15
Room 3	8.1	26'8"	4.4	14'5"	35.6	383	64.0	688	-	-	2.8	9'2"	2.1	6'10"	0.8	2'7"	-	-	18	25	20	16	-	-	15
Room 4	5.0	16'3"	3.9	12'10"	19.5	210	32.0	344	-	-	2.8	9'2"	2.1	6'10"	0.8	2'7"	-	-	-	8	10	6	-	-	8



## 2ND FLOOR FUNCTION ROOMS



 Built-in Screen

 LCD Television

Function Rooms	Square Meter	Square Feet	Ceiling Height Min	Ceiling Height Max	Hollow	Classroom	Theatre	U-Shape	Lunch / Dinner	Buffet	Cocktail
Kam Lai Heen	425.97	4585	3	3.7	—	—	—	—	300	280	400
Peony Room	45.5	489	3	3.7	25	30	60	20	36	36	50
Bamboo Room	27.5	296	3	3.7	14	15	30	12	12	12	20
Lotus Room	166.62	1788	3	3.7	36	55	100	32	96	96	150
Restaurant	259.35	2791	3	3.7	52	154	180	46	168	144	200